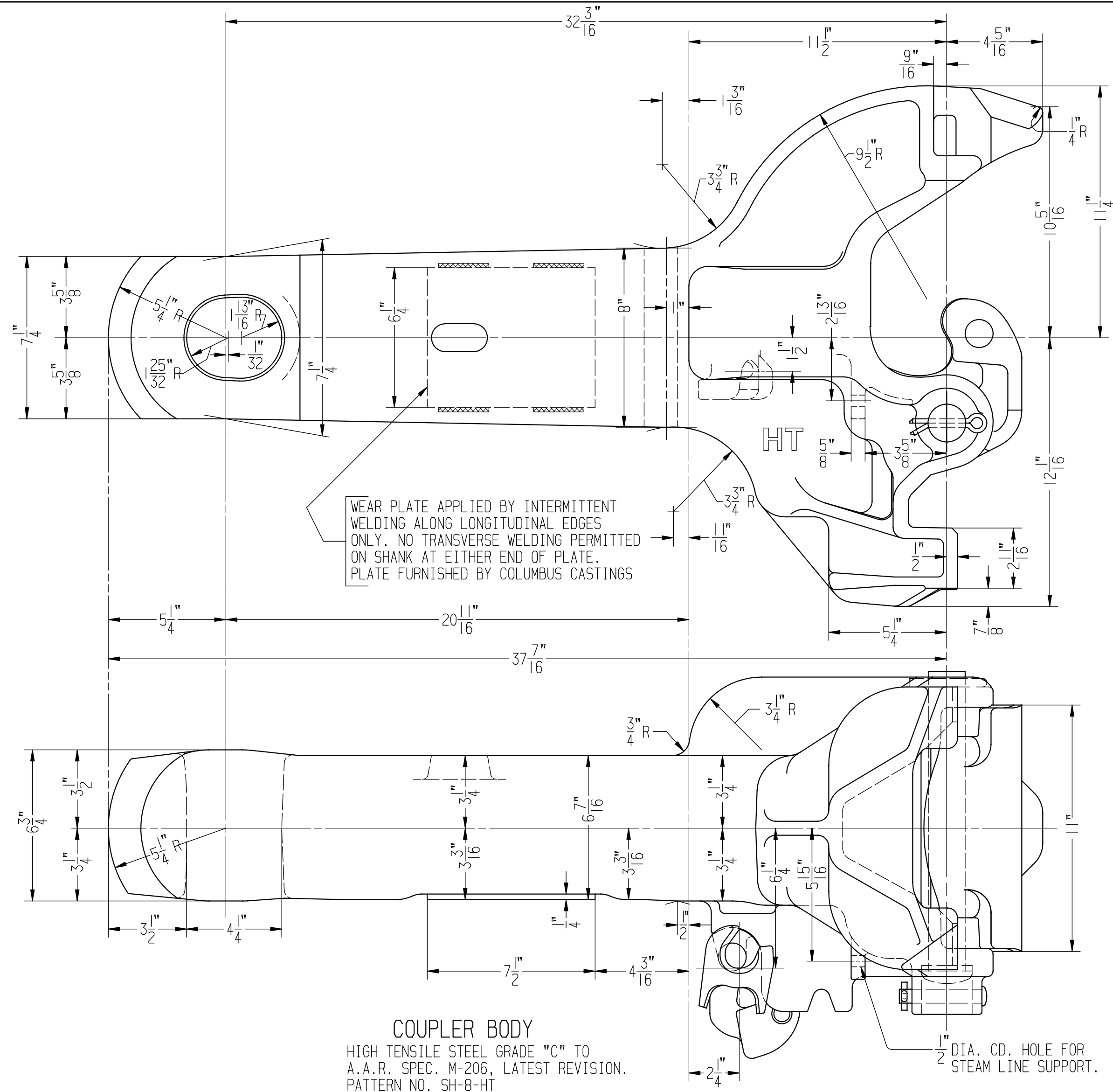
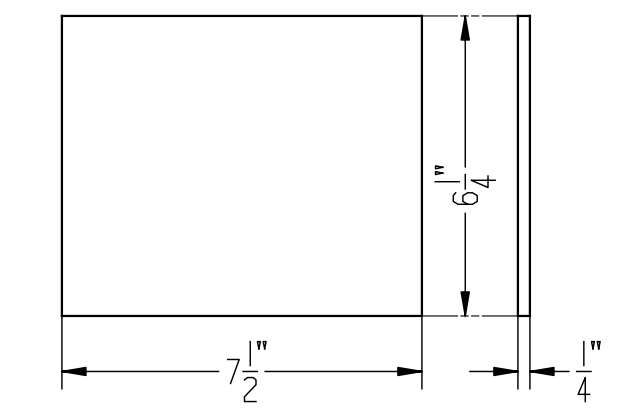


COLUMBUS CASTINGS RESERVES THE RIGHT TO MODIFY DETAILS NOT AFFECTING APPLICATION OR STRENGTH IF NECESSARY TO FACILITATE MANUFACTURE.



WEAR PLATE APPLIED BY INTERMITTENT WELDING ALONG LONGITUDINAL EDGES ONLY. NO TRANSVERSE WELDING PERMITTED ON SHANK AT EITHER END OF PLATE. PLATE FURNISHED BY COLUMBUS CASTINGS

COUPLER BODY
HIGH TENSILE STEEL GRADE "C" TO A.A.R. SPEC. M-206, LATEST REVISION. PATTERN NO. SH-8-HT



COUPLER WEAR PLATE
341-415 BHN
DETAIL DRG. B-13279

COLUMBUS CASTINGS COMPLETE ASSEMBLY IDENTIFICATION NO. SH 8 HT1

COUPLER IS FITTED WITH THE FOLLOWING PARTS.

- | | |
|-------------------------------|------------|
| KNUCKLE | H 50 B-HTS |
| LOCK | H 40 A-HTS |
| KNUCKLE THROWER | H 30 A |
| PIVOT PIN | C 10 |
| PIVOT PIN COTTER | C 11 |
| SUPPORT PIN | C 2 |
| SUPPORT PIN COTTER | C 3 |
| SINGLE ROTARY LOCK LIFT LEVER | BS 13 HT |
| ROTARY LOCK LIFT TOGGLE | H 9 A |
| RIVET | E 5 |
| LOCK-LIFT ASSEM. | BS 15 |

NOTE: LOCK LIFT ASSEMBLY FURNISHED IN ASSEMBLY ONLY.

NOTE: DIMENSIONS WHICH ARE NOT TOLERANCED ARE SUBJECT TO MANUFACTURING VARIATIONS.

COUPLER TO CONFORM TO ALL APPLICABLE SECTIONS OF A.A.R. M-206, LATEST REVISION.

USE, SIZE AND LOCATION OF SHANK CORE SUPPORT HOLE IS OPTIONAL WITH MANUFACTURER.

NOTE: COUPLER AND PARTS ARE PATENTED.

REV.	DATE

A.A.R. TYPE "H" TIGHTLOCK COUPLER
SINGLE ROTARY OPERATION
PATTERN NO. SH-8-HT



Columbus, Ohio

DRAWN BY J.M.P.	CHECKED BY J.W.	DATE 4-17-1998
SCALE 3" = 1'-0"		

CW-14573 SHEET 1 OF 1

THIS DRAWING CONTAINS CONFIDENTIAL AND PROPRIETARY INFORMATION OF COLUMBUS CASTINGS AND THE DRAWING AND THE INFORMATION CONTAINED THEREIN ARE AND REMAIN THE PROPERTY OF COLUMBUS CASTINGS. THIS DRAWING IS PROVIDED WITH THE EXPRESS AGREEMENT THAT THE DRAWING AND THE INFORMATION THEREIN:

- (1) WILL NOT BE REPRODUCED, COPIED OR OTHERWISE TRANSCRIBED, IN WHOLE OR IN PART, BY ANY METHOD;
- (2) WILL NOT BE USED, IN WHOLE OR IN PART, DIRECTLY OR INDIRECTLY, TO ASSIST IN THE MAKING OR TO FURNISH ANY INFORMATION FOR THE MAKING, OF DRAWINGS, PRINTS, APPARATUS OR PARTS;
- (3) WILL NOT BE MADE AVAILABLE TO ANY OTHER PERSON OR ENTITY, IN EACH CASE WITHOUT THE PRIOR WRITTEN CONSENT OF COLUMBUS CASTINGS AS TO EACH SPECIFIC CASE; AND
- (4) WILL BE RETURNED TO COLUMBUS CASTINGS UPON ITS REQUEST. ACCEPTANCE OF THIS DRAWING SHALL CONSTITUTE ACCEPTANCE OF THE FOREGOING AGREEMENTS.